

# Quantum™ QC, 8 Peak Beads

## 8 Peaks for Universal Instrument QC & Set-Up

Quantum™ QC is a 8 peak multi-intensity, multi-fluorescent standard that is intended for use as an in-depth tool for daily cytometer QC, and is appropriate for use with all lasers and detectors. It may be used to determine detection thresholds, understand resolution, and assess and track linearity of detectors. It can aid in providing confidence that the system is suitable for use, or alert operators to potential problems before samples are run.

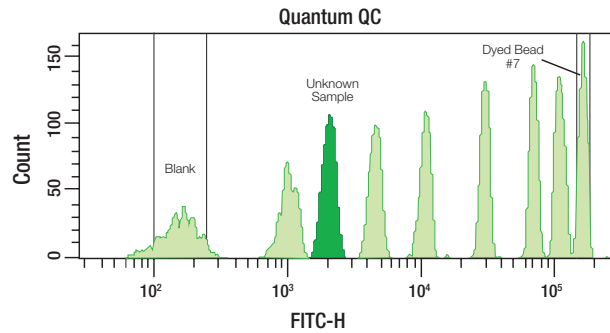
### Daily QC

Quantum™ QC may be used on a routine basis to assess the resolution, linearity and threshold for most detectors on the cytometer. Our QuickCal Linearity tool provides templates for 7 detectors: VIO-450, VIO-525, FITC, PE, PE-Cy™5, APC, and APC-Cy™7.

### Instrument Set-up

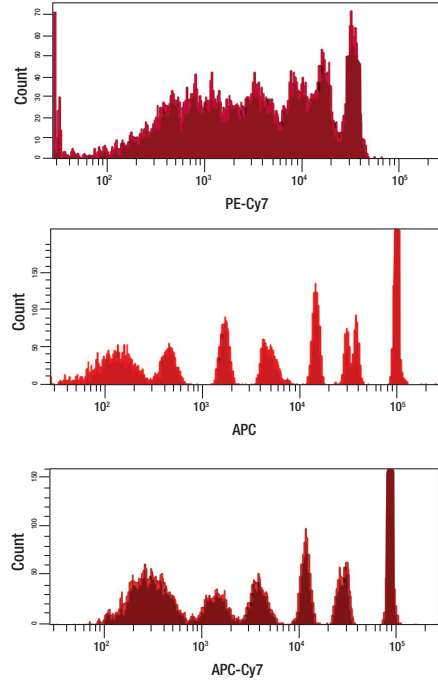
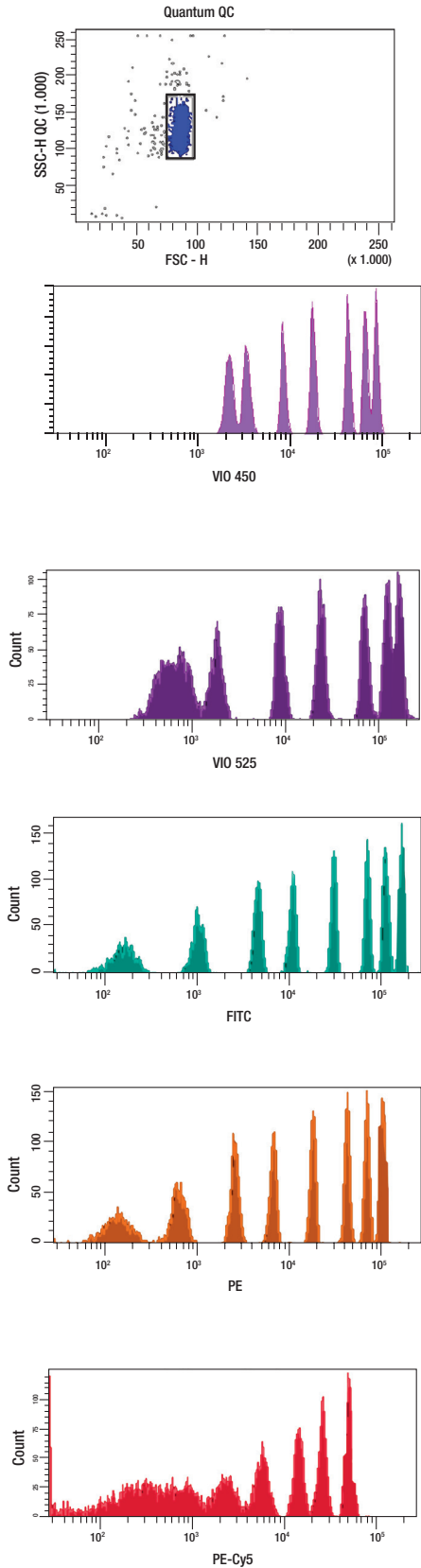
Quantum™ QC may also be used for instrument set-up to achieve standardized PMT settings and define the window of analysis for relevant detectors. Positioning reference populations using specific values to establish the window of analysis, which will aid in standardizing assay run conditions.

Bangs Laboratories, Inc.		QuickCal® Linearity v 2.3-L	
Quantum™ QC 725 / 11446		Instrument ID:	
		Date Acquired:	
		Data Entered:	
<b>VIO-450</b>			
Filter:	Enter		
PMT voltage:	Enter		
Bead	Intensity %	Channel	
Blank		Enter	
Bead #1	20.10	Enter	
Bead #2	25.58	Enter	
Bead #3	38.25	Enter	
Bead #4	52.37	Enter	
Bead #5	75.16	Enter	
Bead #6	90.32	Enter	
Bead #7	100.00	Enter	
Regression Coefficient (r²)	Data incomplete		
Detection Threshold (%)	Data incomplete		
<b>VIO-525</b>			
Filter:	Enter		
PMT voltage:	Enter		
Bead	Intensity %	Channel	
Blank		Enter	
Bead #1	5.45	Enter	
Bead #2	15.57	Enter	
Bead #3	29.76	Enter	
Bead #4	44.82	Enter	
Bead #5	70.04	Enter	
Bead #6	87.13	Enter	
Bead #7	100.00	Enter	
Regression Coefficient (r²)	Data incomplete		
Detection Threshold (%)	Data incomplete		
<b>FITC</b>			
Filter:	Enter		
PMT voltage:	Enter		
Bead	Intensity %	Channel	
Blank		Enter	
Bead #1	12.44	Enter	
Bead #2	22.78	Enter	
Bead #3	32.46	Enter	
Bead #4	49.50	Enter	
Bead #5	70.08	Enter	
Bead #6	84.80	Enter	
Bead #7	100.00	Enter	
Regression Coefficient (r²)	Data incomplete		
Detection Threshold (%)	Data incomplete		
<b>PE</b>			
Filter:	Enter		
PMT voltage:	Enter		
Bead	Intensity %	Channel	
Blank		Enter	
Bead #1	12.46	Enter	
Bead #2	21.91	Enter	
Bead #3	32.48	Enter	
Bead #4	48.73	Enter	
Bead #5	69.55	Enter	
Bead #6	84.16	Enter	
Bead #7	100.00	Enter	
Regression Coefficient (r²)	Data incomplete		
Detection Threshold (%)	Data incomplete		
<b>PE-Cy™5</b>			
Filter:	Enter		
PMT voltage:	Enter		
Bead	Intensity %	Channel	
Blank		Enter	
Bead #1		Enter	
Bead #2		Enter	
Bead #3	26.82	Enter	
Bead #4	39.67	Enter	
Bead #5	58.48	Enter	
Bead #6	75.20	Enter	
Bead #7	100.00	Enter	
Regression Coefficient (r²)	Data incomplete		
Detection Threshold (%)	Data incomplete		
<b>APC</b>			
Filter:	Enter		
PMT voltage:	Enter		
Bead	Intensity %	Channel	
Blank		Enter	
Bead #1	6.95	Enter	
Bead #2	11.50	Enter	
Bead #3	19.63	Enter	
Bead #4	29.66	Enter	
Bead #5	46.27	Enter	
Bead #6	65.69	Enter	
Bead #7	100.00	Enter	
Regression Coefficient (r²)	Data incomplete		
Detection Threshold (%)	Data incomplete		
<b>APC-Cy™7</b>			
Filter:	Enter		
PMT voltage:	Enter		
Bead	Intensity %	Channel	
Blank		Enter	
Bead #1		Enter	
Bead #2	9.65	Enter	
Bead #3	18.48	Enter	
Bead #4	28.13	Enter	
Bead #5	44.13	Enter	
Bead #6	63.57	Enter	
Bead #7	100.00	Enter	
Regression Coefficient (r²)	Data incomplete		
Detection Threshold (%)	Data incomplete		



### Quantum™ QC Expected Results (LSRII, FACSDiVa)

Note: For additional detectors (e.g. UV and green lasers), see PDS 725A [www.bangslabs.com](http://www.bangslabs.com).



#### QUANTUM™ QC, 8 PEAK BEADS

Cat. #	Product Description
725	Quantum™ QC • 8 Peaks

Quantum™ QC is a trademark of Bangs Laboratories, Inc.  
 QuickCal® is a registered trademark of Bangs Laboratories, Inc.  
 Tween® is a registered trademark of ICI Americas, Inc.  
 Cy™ is a trademark of GE Healthcare Limited.



**Bangs Laboratories** manufactures magnetic, polymeric and silica microsphere products setting the standards for diagnostic, research, and flow cytometry applications. No matter the project, we have a product that serves or we'll work to custom-design a solution to fit. And that's not the half of it.


We also stand behind our products. Regardless of the size of your question or the size of your company, we offer tech support, absolutely free.


Sound interesting?



Visit: [www.bangslabs.com](http://www.bangslabs.com)

 @particledoc

 [info@bangslabs.com](mailto:info@bangslabs.com)

 800.387.0672